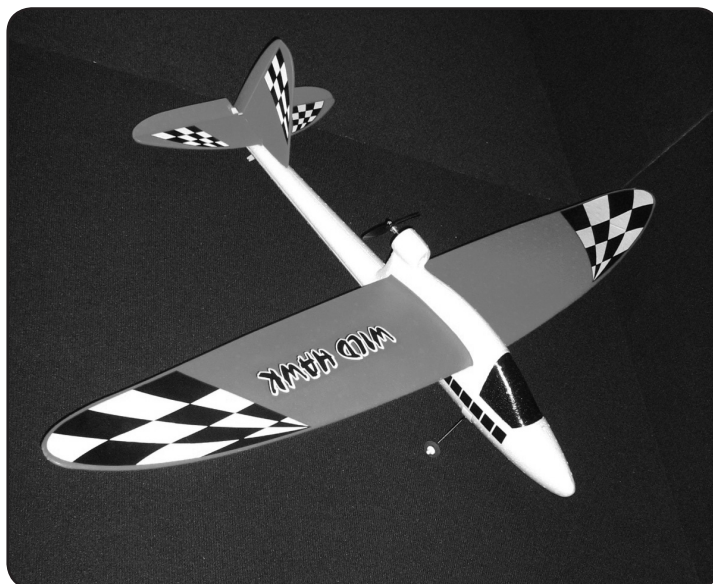


REMOTE CONTROLLED EASY FLY AIRPLANE

Model 94774

SET UP AND OPERATING INSTRUCTIONS



Visit our website at: <http://www.harborfreight.com>



IMPORTANT!

**Warranty does not apply to crash damage.
Read this material before using this product.
Failure to do so can result in serious injury.
SAVE THIS MANUAL.**

Copyright© 2006 by Harbor Freight Tools®. All rights reserved. No portion of this manual or any artwork contained herein may be reproduced in any shape or form without the express written consent of Harbor Freight Tools. Diagrams within this manual may not be drawn proportionally. Due to continuing improvements, actual product may differ slightly from the product described herein. Tools required for assembly and service may not be included.

For technical questions or replacement parts, please call 1-800-444-3353.

Revised Manual 08i, 09k

SAVE THIS MANUAL

Keep this manual for the safety warnings and precautions, assembly, operating, inspection, maintenance and cleaning procedures. Write the product's serial number in the back of the manual near the assembly diagram (or month and year of purchase if product has no number). Keep this manual and the receipt in a safe and dry place for future reference.

SPECIFICATIONS

Material	ABS plastic, EPP Foam
Plane Battery	NiMH 8.4 V, 1300 mAh
Radio	3 Channel, 6 Frequencies
Wing Span	54-15/16" L X 7-7/8" W
Length	34-15/16" L
Range	1,640'
Approximate Fly Time	20-30 minutes
Remote Batteries Required	8 "AA" (not included)



IMPORTANT SAFETY INSTRUCTIONS!



READ ALL INSTRUCTIONS BEFORE USING THIS PRODUCT!

SAFETY WARNINGS AND PRECAUTIONS

WARNING: When using product, basic safety precautions should always be followed to reduce the risk of personal injury and damage to equipment.

Read all instructions before using this product!

1. **Keep work area clean.** Cluttered areas invite injuries.
2. **Observe work area conditions.** Keep work area well lit. Keep work area uncluttered and free of debris. Cluttered areas invite injury.
3. **Check for damaged parts.** Before using any product, any part that appears damaged should be carefully checked to determine that it will operate properly and perform its intended function. Check for any broken, loose or damaged parts and any other conditions that may affect its operation. Replace or repair damaged or worn parts immediately.
4. **Replacement parts and accessories.** When servicing, use only identical replacement parts. Use of any other parts will void the warranty.
5. **For ages 16 and over. Do not let children use the Airplane without adult supervision.** Failure to do so could result in personal injury and/or property damage.
6. **Wear ANSI-approved impact safety goggles when assembling this product.**
7. **Maintain products with care.** Keep the Airplane in a dry location. Do not expose it to prolonged moisture.

8. **Store idle equipment.** When not in use always lock up the Airplane.
9. **Dress properly.** Wear restrictive hair covering to contain long hair.
10. **Use the right Airplane for the job.** Do not attempt to force a small Airplane to do the work of a larger Airplane. There are certain applications for which this Airplane was designed. Do not modify this Airplane and do not use this Airplane for a purpose for which it was not intended.
11. **Do not use or assemble the Airplane if under the influence of alcohol or drugs.** Read warning labels on prescriptions to determine if your judgement or reflexes are impaired while taking drugs. If there is any doubt, do not assemble or use the Airplane.
12. **Do not pick up the Airplane while it is in motion.**
13. **Use only batteries of the type recommended and do not mix old and new batteries.**
14. **Do not incinerate batteries.** Batteries may burst, causing personal injury and/or property damage.
15. **Remove batteries if the Airplane is not used for a long period of time.**
16. **Do not recharge non-rechargeable batteries.**
17. **Use the Airplane in a large area free from interference from trees, electrical power lines and other obstacles.** Do not fly near buildings, cars or busy streets and do not fly at or near people or animals.
18. **Airplane and Charger should always be used with adult supervision.**
19. **Do not fly the Airplane if wind speeds are above 10 MPH.**
20. **Do not allow children to use glue without adult supervision.** Store glue out of reach of children and animals.
21. **If two airplanes with the same frequency are used (both with the same numbers on the transmitter and/or receiver) they must be at least 1,640 feet away from one another.**
22. **Before flying, perform a distance check to be certain that you can maintain radio control at least 25 feet from the transmitter to the Airplane with the antenna collapsed.**
23. **Do not trim the Airplane's antenna.** Trimming the antenna will affect radio range.
24. **People with pacemakers should consult their physician(s) before use.** Electromagnetic fields in close proximity to heart pacemaker could cause pacemaker interference or pacemaker failure.
25. **The warnings, cautions, and instructions discussed in this instruction manual cannot cover all possible conditions and situations that may occur.** It must be understood by the operator that common sense and caution are factors which cannot be built into this product, but must be supplied by the operator.

ASSEMBLY

Your Radio Controlled Airplane will require complete assembly. It is important that you read the entire manual to become familiar with the product BEFORE you assemble and use the Airplane. Before assembling the Airplane be sure that you have all parts described in the Parts List and Assembly Diagram located on page 8 of this manual.

Figure 1

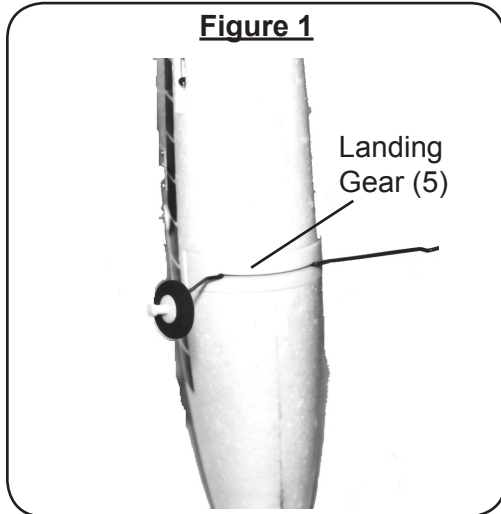
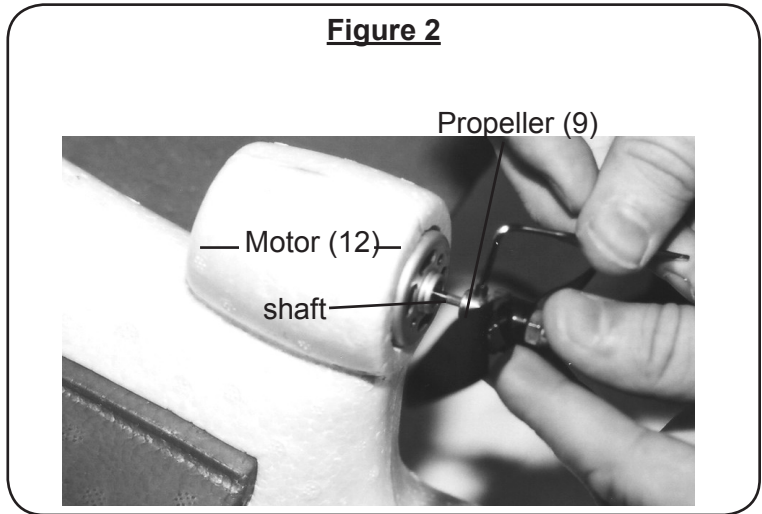
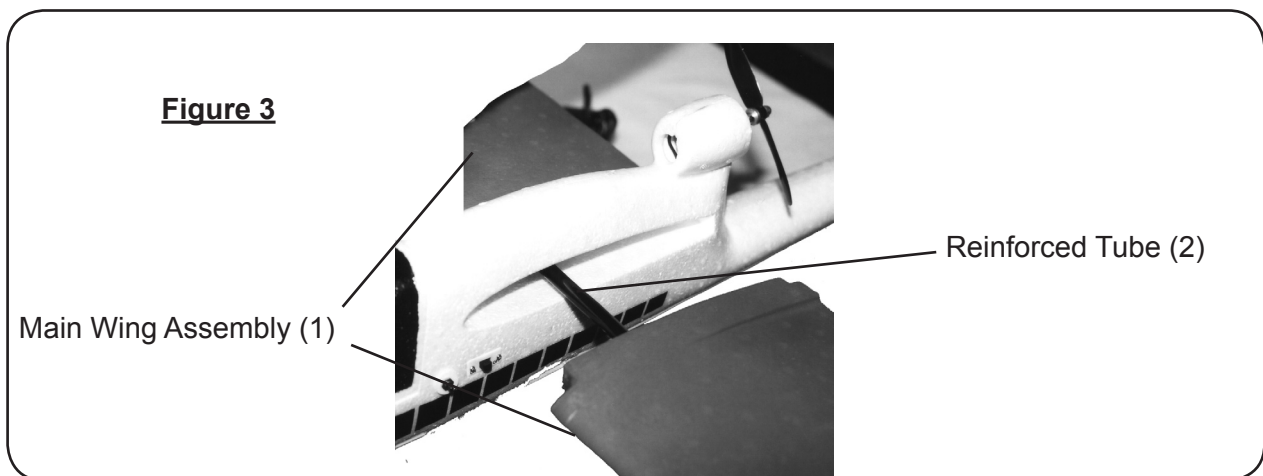


Figure 2



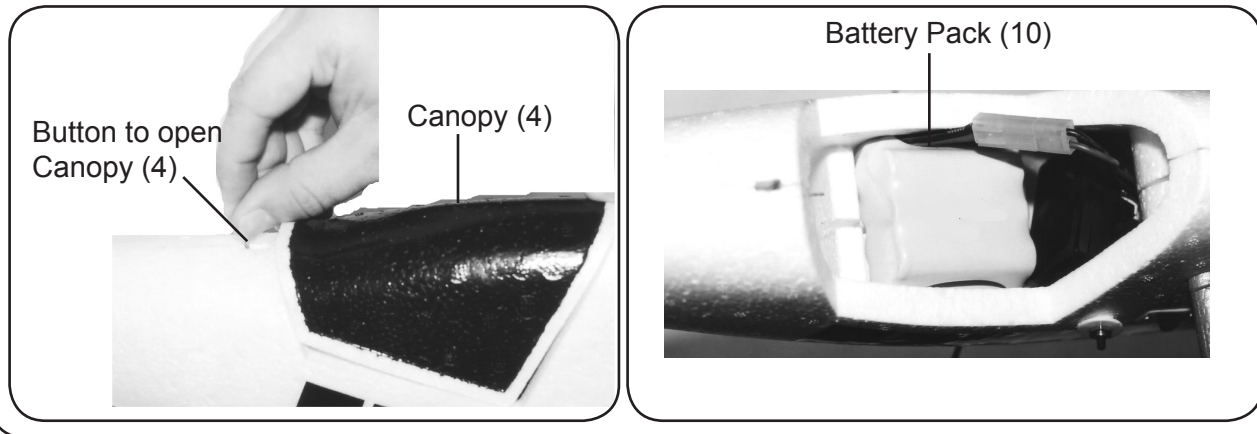
1. Insert the Landing Gear (5) up into the slot beneath the fuselage by pinching it and sliding it into place - see Figure 1.
2. Using Hex Wrench (19), remove the Hex Nut from the end of the shaft on the Motor (12). Slide the Propeller (9) onto the shaft. Thread the Hex Nut back onto the end of the shaft to secure the Propeller (9) in place-see Figure 2. Please note and make certain of correct directional setting for the Propeller once it is installed.

Figure 3



3. Insert the Reinforced Tube (2) into one Main Wing (1). Insert the free end of the Reinforced Tube (2) through the hole in the fuselage and into the second Main Wing, thus connecting both Main Wings together as seen in Figure 3 and the Assembly Diagram.

Figure 4-Opening Canopy for Battery Pack



4. Open the Canopy (4) by sliding down the button located on the front of the Canopy (4) and lifting the Canopy (4). Connect the Battery Pack (10) to the socket located inside the Fuselage (3) - see Figure 4. Once the Battery Pack (10) is in place, close the Canopy.

Tail Assembly

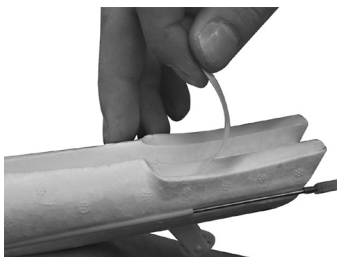


Figure 4a



Figure 5a

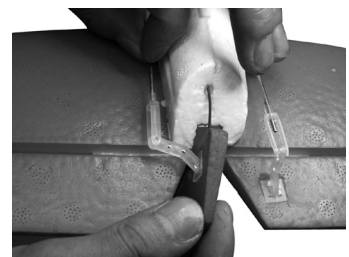


Figure 6a

1. Remove all the protection paper at the bottom of the Vertical Fin/Rudder (6a) and Level Stabilizer (6b). Attach Vertical Fin to Level Stabilizer.
2. Remove the protection paper in the tail of the Fuselage (3) as shown in Figure 4a.
3. Insert Wing Assembly (6) to Fuselage (3). Make sure the position is correct and it is tightened by the protection paper.
4. Connect the Pushrods (8) to the Rudder (6a) and Level Stabilizer/Elevator (6b) as shown in Figure 5a.
5. Adjust the clips to level both the Rudder (6a) and Elevator (6b) as shown in Figure 6a.

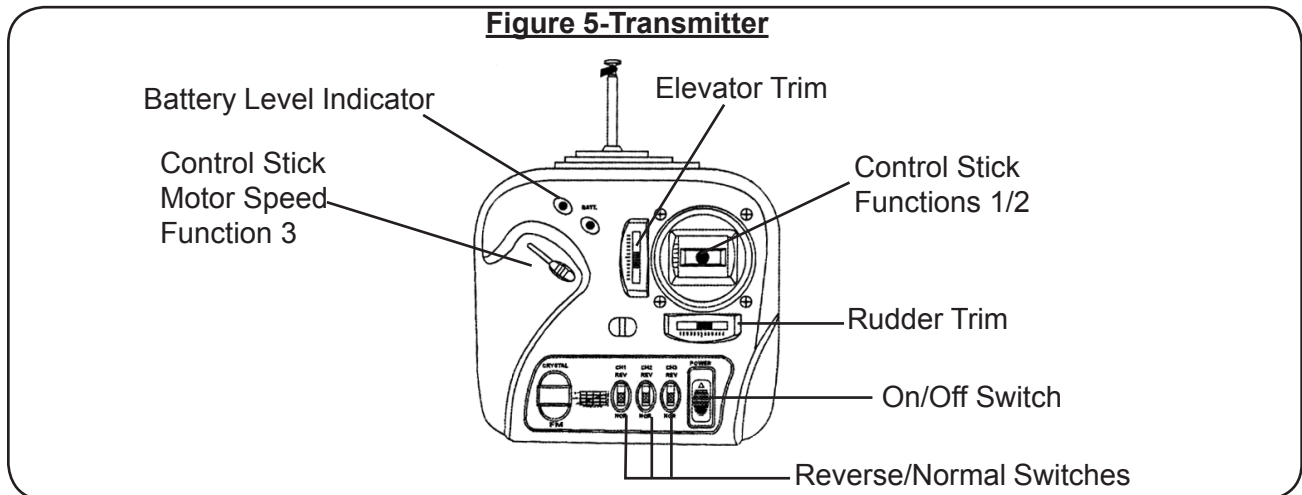
Charging the Battery Pack

1. Plug the Charger (11) into a 120 V~ electrical outlet. Place the battery on a fireproof surface. Plug the Battery Pack (10) into the Charger (11).

2. Allow up to 5 hours for initial charge and all following charges. The length of time for charging the Battery Pack (10) will depend on the status of the current charge existing in the Battery Pack.

Setting up/Operating the Radio Transmitter

Figure 5-Transmitter



1. The Transmitter uses 8 “AA” batteries (not included). Remove the battery compartment cover. Insert the batteries into the battery compartment making certain to line up the batteries with the polarity indicated in the battery compartment. Press the battery compartment cover back into place.
2. The Radio Transmitter (18) transmits a signal to the Airplane’s receiver.
3. The Transmitter is turned ON and OFF with the On/Off Switch located on the bottom right side of the Transmitter-see Figure 5.
4. The Transmitter has 3 key functions used to control the Airplane-see Figure 5. Function 1 is controlled by the Main Control and turns the Airplane left or right. Move the Control Stick to the right to make the Airplane go right, and left to go left. Remember that when the Airplane is heading toward you the controls will be reversed. Function 2 controls flying up or down. Moving the Control Stick forward will cause the Airplane to descend, moving the Control Stick back will cause the Airplane to ascend. Function 3 is used for speeding up or slowing down the Airplane Motors.
5. Attach the Ribbon (17) to the Transmitter Antenna.
6. The Transmitter has a Reverse setting that is used to change the direction of the controls. For example, moving the Control Stick to the right turns the Airplane left if the Reverse setting is engaged.
7. The trims are used to fine tune the function of the control stick. Before flying, set the Trims (elevator and rudder) to the center position. The trims will likely require additional adjustment in flight to allow the plane to fly properly.

FLYING THE AIRPLANE

1. Choose a day when the wind is light. The Ribbon (17) attached to the Transmitter antenna should be blowing slightly (not greater than 30 degrees) and not be blowing straight out. Find a wide-open field.
2. **Turn ON the Radio Transmitter. To avoid interference, always turn on the Transmitter before turning on the Airplane. Turn on the airplane.**
3. Two people should work together to hand launch the Airplane. One should control the Remote Control and one will launch the Airplane.
4. Face the Airplane into the wind. Move the left hand control stick all the way up. Then the person should carefully keep their hands away from the propeller while pressing the red button* on the airplane. The motor should now be is running at full power.
5. With the Airplane tilted at about 10 degrees, propel and release it into the wind.
6. Let the Airplane climb to and fly at about 50 to 300 feet.
7. To steer the Airplane, move the Control Stick (Functions 1 and 2) to the left to steer to the left, and right to steer it right. Move the elevator and rudder trims slightly to adjust for minor changes in direction and tilt of the Airplane.

Note: Letting go of the Control Sticks will automatically bring them to a center position. This will cause the Airplane to resume normal flight if the trims are adjusted properly.

8. Normal flight time for one full charge is about 20-30 minutes. When the battery begins to reach the end of its power, the red LED light on the Transmitter will light up, indicating low transmitter power. When this occurs, IMMEDIATELY LAND THE AIRPLANE.

Important: If damage is caused due to a crash; your warranty is void.
--

9. To bring in the Airplane for landing, glide the Airplane down against the wind. Move the left Control Stick toward the center to slow the Propellers. Move the right Control Stick to adjust for direction. Continue to decrease the Propeller speed and direction until you bring them to a stop and land the Airplane.
10. Turn OFF the Airplane and then turn OFF the Transmitter.

INSPECTION, MAINTENANCE AND CLEANING

1. Inspection, maintenance, and cleaning should be performed only by an adult. Turn off the Airplane and Transmitter before inspection, adjustment, maintenance or cleaning.
2. Do not use solvents or liquid cleaners to clean the Airplane. Use of solvents or liquid cleaners will damage the material. Use only a dry, soft cloth for cleaning.
3. Before each use check for loose screws, misalignment or binding of moving parts, cracked or broken parts, damaged housing, damaged wiring, loose wheels and any other condition that may affect its safe operation. **Do not use a damaged Airplane.**

* The red button is a safety device to prevent the plane from starting accidentally. It must be pushed before the propeller can start.

TROUBLESHOOTING

1. Transmitter does not seem to work or Airplane does not receive signal.

- a. Make certain that the 8 batteries in the Transmitter are fresh.
- b. Make certain that the Battery Pack (10) is fully charged.
- c. Test your distance from the Airplane. Verify that you can maintain control of the Airplane from a distance of at least 25 Feet.
- d. Make certain you have not trimmed the Antenna. Trimming the Antenna will affect radio range.

2. Red LED light on Transmitter is flashing.

This indicates that the batteries have reached the end of their power. Replace with new batteries.

3. The Airplane is flying unevenly.

- a. Check that the Push Rods (8), Rudder (6a) and Level Stabilizer/Elevator (6b) are intact and have been correctly assembled-see Figure 5a.
- b. Move the Sub-Trim (see Figure 5) slightly. Adjust the Control Stick-Functions 1/2 until the Airplane is flying evenly.

4. The Airplane is climbing too slow.

Pull the Sub-Trim (see Figure 5) slightly to the left. If this does not fully correct the problem, move the Control Stick down slightly.

5. The Airplane is flying erratically with “waves.”

Move the Sub-Trim (see Figure 5) slightly. If still not corrected, move the left Control Stick up slightly. Continue to adjust the Control Sticks until the Airplane is flying at a constant level.

6. The Airplane does not take-off.

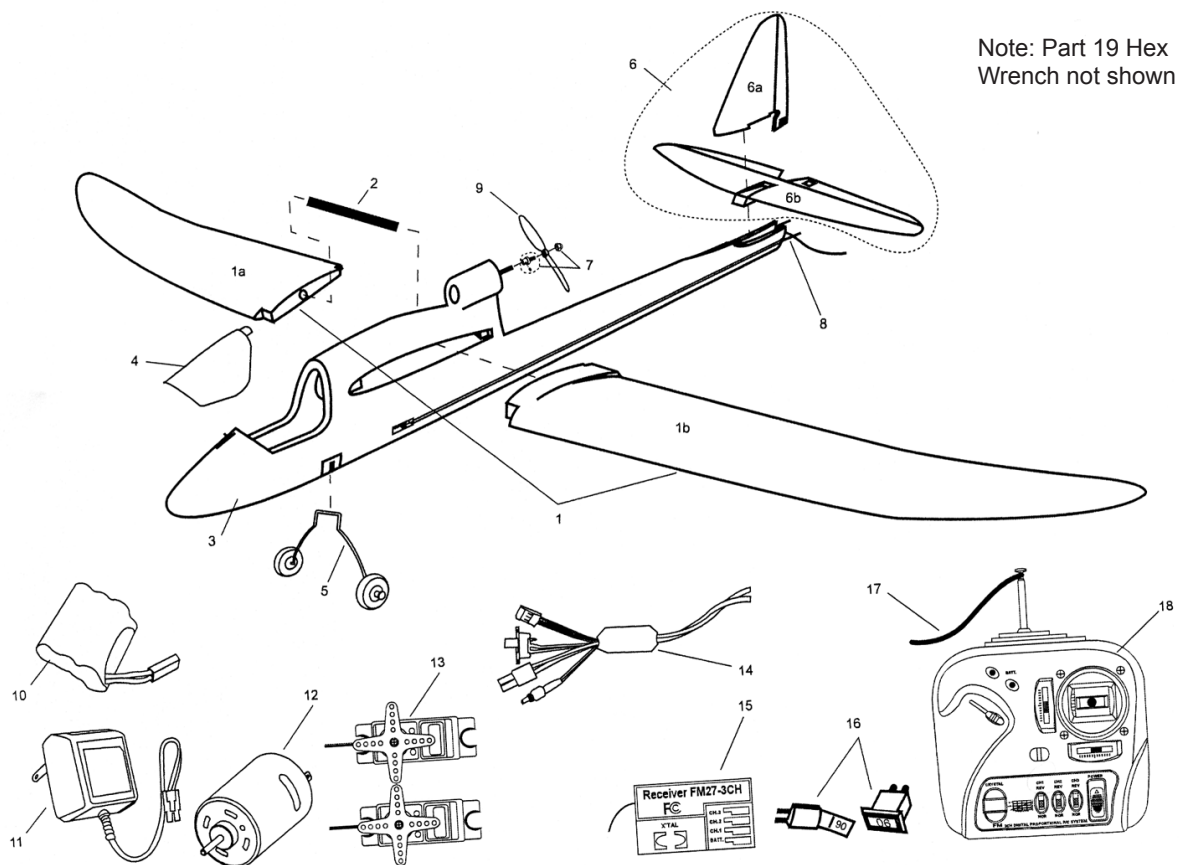
- a. Make certain that the Propeller is installed with the correct directional setting-see Figure 2.
- b. There may be too much wind. Choose a day when the wind is light. The Ribbon (17) attached to the Transmitter antenna should be blowing slightly (not greater than 30°) and not be blowing straight out.

PARTS LIST

Part	Description	Q'ty
1	Main Wing Assembly	1
2	Reinforced Tube	1
3	Fuselage	1
4	Canopy	1
5	Landing Gear	1
6	Tail Wing Set	1
7	Shaft Adapter	1
8	Push Rod	2
9	Propeller	2
10	Battery Pack	1

Part	Description	Q'ty
11	Charger	1
12	Motor	1
13	Servo	2
14	Speed Controller	1
15	Receiver	1
16	Crystals (pair)	1
17	Ribbon	1
18	Transmitter	1
19	Hex Wrench	1

ASSEMBLY DIAGRAM



Note: Some parts are listed and shown for illustration purposes only and are not available individually as replacement parts.

PLEASE READ THE FOLLOWING CAREFULLY

THE MANUFACTURER AND/OR DISTRIBUTOR HAS PROVIDED THE PARTS DIAGRAM IN THIS MANUAL AS A REFERENCE TOOL ONLY. NEITHER THE MANUFACTURER NOR DISTRIBUTOR MAKES ANY REPRESENTATION OR WARRANTY OF ANY KIND TO THE BUYER THAT HE OR SHE IS QUALIFIED TO MAKE ANY REPAIRS TO THE PRODUCT OR THAT HE OR SHE IS QUALIFIED TO REPLACE ANY PARTS OF THE PRODUCT. IN FACT, THE MANUFACTURER AND/OR DISTRIBUTOR EXPRESSLY STATES THAT ALL REPAIRS AND PARTS REPLACEMENTS SHOULD BE UNDERTAKEN BY CERTIFIED AND LICENSED TECHNICIANS AND NOT BY THE BUYER. THE BUYER ASSUMES ALL RISK AND LIABILITY ARISING OUT OF HIS OR HER REPAIRS TO THE ORIGINAL PRODUCT OR REPLACEMENT PARTS THERETO, OR ARISING OUT OF HIS OR HER INSTALLATION OF REPLACEMENT PARTS THERETO.